



Thanks to our solar energy panels spread over an area of 2,500 m² on the roof of our R&D Center building and our systems with an annual capacity of 0.6 MW, we significantly reduce our carbon footprint. By generating our own electricity, we invest in reliable, sustainable, and accessible clean energy and take responsibility for an environmentally conscious future.

SAIL STAR BUSINESS CENTER
Floor 16th - Office 1606, Court Tower
Building - Business Bay - Dubai



wahaair.com





HIGH TECHNOLOGY



7 EMIRATES PRODUCTION EXPERIENCE



HIGH PRODUCTION CAPACITY



EXPERIENCED MANAGEMENT TEAM



EXPORTING INTERNATIONALLY



ENVIRONMENTALLY FRIENDLY



WAHA AIR, reserves the right to introduce changes of parameters and sizes in the process of improvement of the devices. 3

UNITS

Waha Air Units include Air Handling Units that are used to change the thermodynamic properties (temperature, humidity) of the air and Heat Recovery Units that can recover the energy of the air in the air-conditioned area. These unit groups are used in residential and commercial areas, industrial applications and special places such as indoor pools and operating rooms, to provide the desired air conditions.

DKS/HKS

Air Handling Unit



POOL

Package Pool Dehumidifier Unit



PACKAGE TYPE UNITS

ECRH

Rooftop Unit



HEAT/ENERGY RECOVERY UNITS

BGK

Cross Flow Heat Recovery Unit with Bypass Damper



IGK

Cross Flow Heat Recovery Unit



CFHR

Counter Flow Heat Recovery Unit (Ceiling Type)



CFHR-S

Cellulosic Cross Flow Energy Recovery Unit



HPGK

Heat Pump Heat Recovery Unit



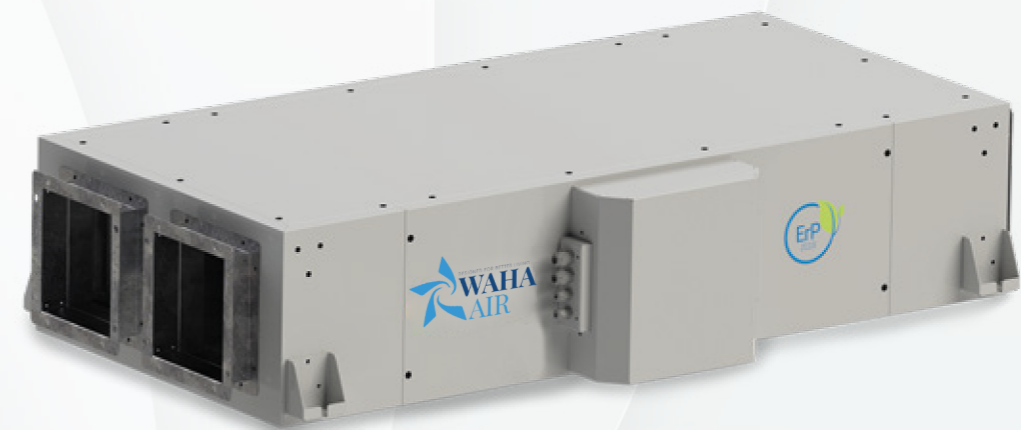
RTER

Rotary Type Energy Recovery Unit



CFHR-U

Universal Heat Recovery Unit



FHR

Counter Flow Heat Recovery Unit



FHR-T

Counter Flow Heat Recovery Unit (Vertical Type)



Vertical Wall Mounting



Suspended Ceiling Mounting



Horizontal Wall-Mounted / Floor-Standing (Independent Installation)

RESIDENTIAL HEAT/ENERGY RECOVERY UNITS

UNIT HEATER

HOME

Residential Heat Recovery Unit



EPP HOME [Expanded Polypropylene]

Residential Heat Recovery Unit



AAP

Unit Heater with Axial Fan



RAP

Unit Heater with Radial Fan



HOME HW

Heat Pump Heat Recovery Unit with Domestic Hot Water Heating



HOME CEILING

Residential Heat Recovery Unit [Ceiling Type]



EXHAUST FANS

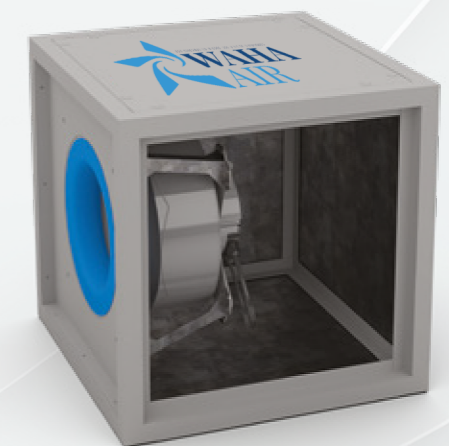
ECO/DECO

Exhaust Fans



CUBIC

Exhaust Fans



VRF SYSTEMS

FKDU-10TDSH1

VRF Outdoor Unit



FKDS-04MDCH1

Mini VRF Outdoor Unit



VRF

Indoor Units

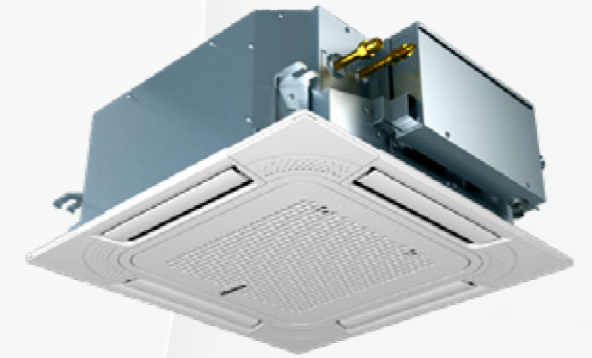
DKBMH1

4-Way Blown Cassette Ceiling Type



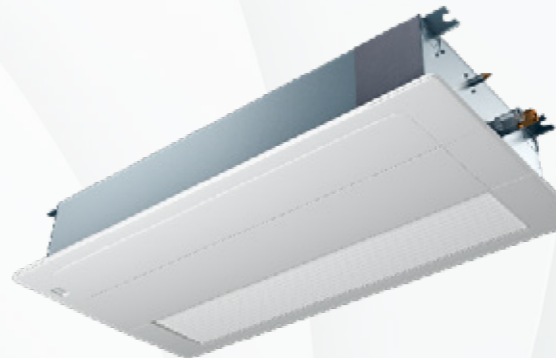
DKMH1

4-Way Blow Compact Cassette Ceiling Type



TKMH1

One-Way Blown Cassette Ceiling Type



DMMH1

Wall Mounted



TLAMH1

Concealed Ceiling Type



TYMH1

High Pressure Concealed Ceiling Type

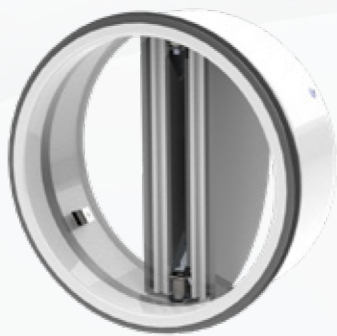


DAMPERS

Waha Air Dampers are used in order to balance the airflow. Fire dampers have 120 minutes resistance in accordance with EN 1366-2, and smoke control dampers have 90 minutes resistance in accordance with EN 1366-10. These products have CE in accordance with EN 12101-8 and EN 15650 standards and also, help to prevent the spread of fire and smoke.

VKF

Shut-Off Damper



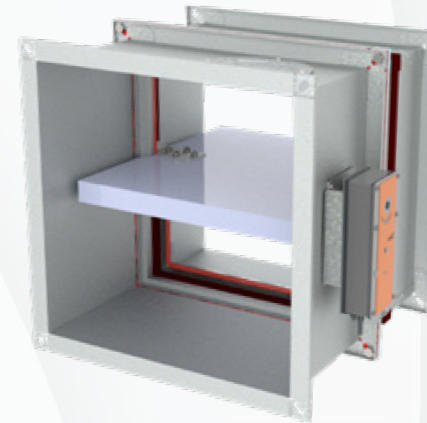
VGC

Smoke Control Damper (EN 1366-10)



VGf/VGU

Rectangular Fire Damper (EN 1366-2)



VKT

Prismatic Sealed Damper



VDM

Rectangular Volume Control Damper



VKG

Rectangular Backdraft Damper



VKS

Circular Sealed Damper



FLOW CONTROL UNITS

Waha Air Control Units provide to control of airflow, temperature and pressure of the indoor air.

ACB
Circular Variable Air Volume Unit [VAV]



ACA
Rectangular Variable Air Volume Unit [VAV]



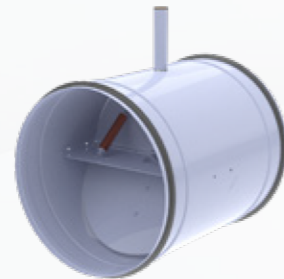
ACC
Circular VAV Box



ACF
Rectangular Variable Air Volume Box



ACV-ACD
Circular Constant Air Volume Unit [CAV]



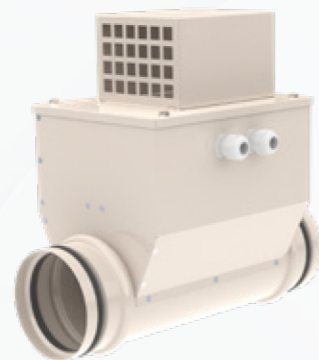
ACE
Duct Type Rectangular/Circular Electric Heater



ACD
Circular Constant Air Volume Unit [CAV]



ACO-ACY
Proportional Electric Heaters [CAV]



ACQ
Duct Type Circular Electric Heater



CLEANROOM PRODUCTS & SOUND ATTENUATORS

Waha Air Clean Room Product range is designed for places, required very critical hygiene and air quality. Sound Attenuators are used for reduction of fan noise. These are manufacturing in order to use on circular and rectangular ducts.

GFP
Type 1/ Type2 HEPA Filter Box



GFB
Type 1/ Type2 HEPA Filter Box [Low Ceiling]



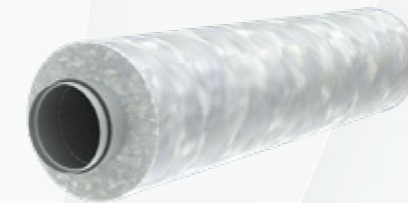
GFD
Type 1/ Type2 HEPA Filter Box [Top Entry]



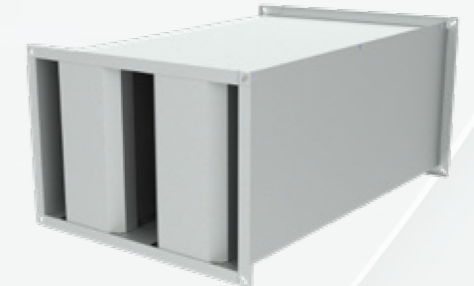
GFL
Fiber Filter Grille



GSS
Attenuators for Circular Duct



GSP
Attenuators for Rectangular Duct



GLD
Laminar Flow Ceiling System



GLD-R
Laminar Flow Ceiling System [Recirculated]



DIFFUSERS

Waha Air offers solutions for comfort applications and many industrial applications with its wide range of diffuser products. These diffusers can be used in ceiling, wall and floor applications. It ensures that the conditioned supply air reaches the comfort zone at the most appropriate speed and temperature.

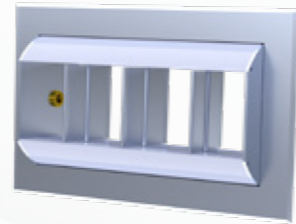
OAK
Square Ceiling Diffuser



OAD
Circular Ceiling Diffuser



OND
Drum Diffuser



ONN
Jet Nozzle Type-1



ONH
Jet Nozzle Type-2



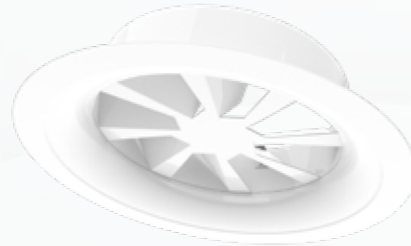
ONT
Telescopic Diffuser



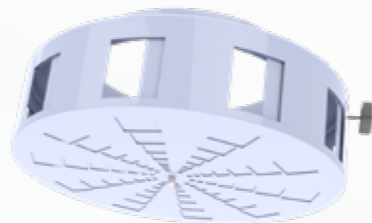
OSH
Swirl Diffuser with Adjustable Blades



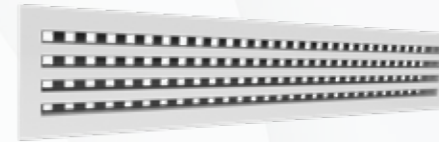
OSY
High Capacity Swirl Diffuser



OSK
Ideal Comfort Diffuser



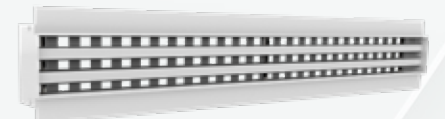
OLA/OLB
Slot Diffuser with Damper



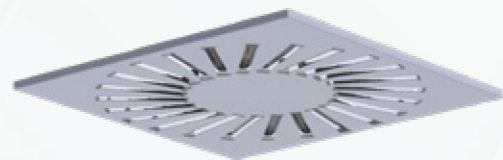
OLY/OLZ
Slim/Large Type Slot Diffuser with Circular Blade



OLT
Gypsum Type Slot Diffuser



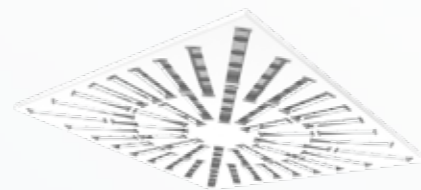
OSA
Swirl Diffuser with Adjustable Blades Type-1



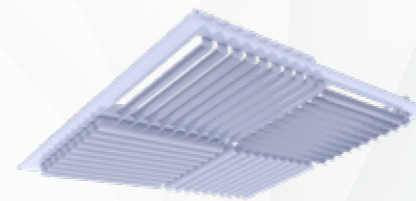
OSB
Swirl Diffuser with Adjustable Blades Type-1/2



OSC
Swirl Diffuser with Adjustable Blades Type-3



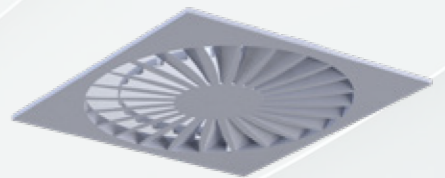
OSQ
Four Way Swirl Diffuser with Adjustable Blades



OSM
Swirl Diffuser



OSN
Swirl Diffuser

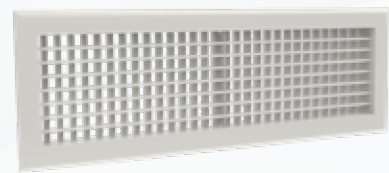


GRILLES AND LOUVRES

Waha Air has several types of grilles/louvres, useful for different architectural applications. These grilles can be used both in air ducts, as supply and extract grille and as transfer grilles between two areas. There are different frame types and mounting details. External louvres, prevent any entry from outside such as rain, snow to the air duct, by using it on supply and exhaust side of air ducts.

DMD/DMT

Single/Double Deflection Grille



DML

Linear Grille



DMK/DMP

Access Egg/Egg Crate Grille



DPC

Circular External Louvre



DMY/DMZ

Single/Double Circular Duct Grille



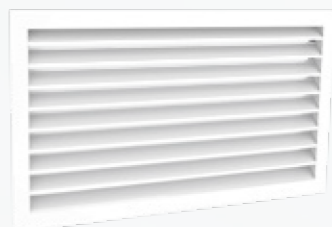
OAV

Disc Valve



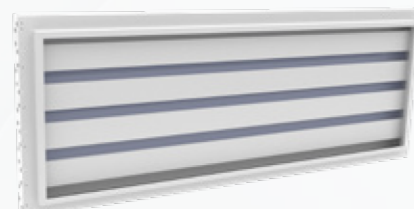
DPE

External Louvre



DPK

Sand Trap Louvre



DPS

Acoustic Louvre



DISPLACEMENT DIFFUSERS

Waha Air Displacement Diffusers ensure that air-conditioned air is distributed to the comfort area at ideal temperature and low speeds in large spaces with high ceilings.

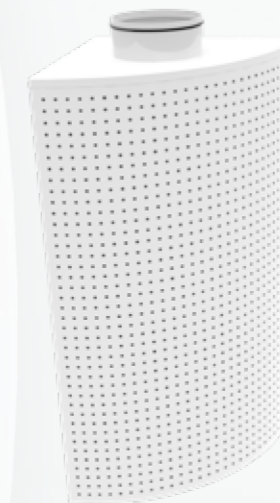
UDD

Rectangular Displacement Unit



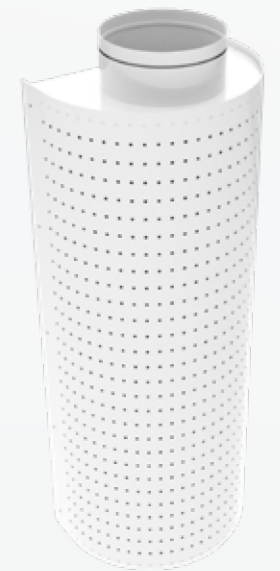
UDK

Corner Type Displacement Unit



UDY

Semi-Circular Displacement Unit



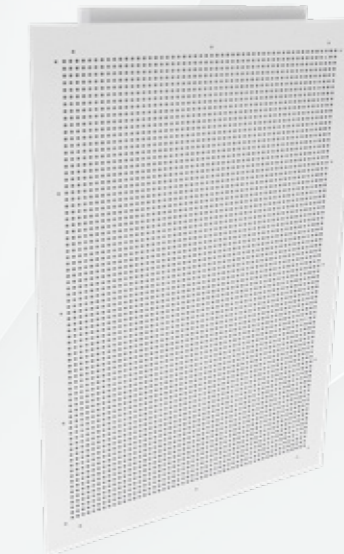
UDS

Circular Displacement Unit



UDF

Wall Type Displacement Unit



KITCHEN VENTILATION PRODUCTS

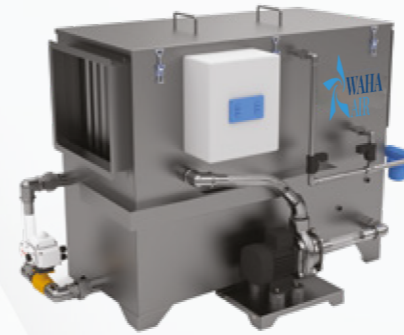
High performance Make-up Air Hood produced by WAHA AIR provide a hygienic and quality environment in the cooking areas of industrial kitchens. With its double-walled structure, it reduces the exhaustion of conditioned air by 30-40%. Thanks to its special grease trap filters, it prevents the passage of oil into the air duct, reducing cleaning costs and reducing the risk of fire.

WAHA AIR Kitchen Ventilation Products are produced for the elimination of grease, odor and smoke, especially in commercial kitchen of high rise buildings, hotels and malls' exhaust air stream. These are environment friendly units that prevent flue gas evolution to the atmosphere. Also, it reduces the risk of the spread of fire by preventing the grease.

KITCHEN
Ecology Unit



SMOKE
Smoke Washer



KEF
Kitchen Exhaust Fan



HYH / HWW / HWC

HYH - Exhaust Hoods with Supply Air
HWW - Water Wash Exhaust Hoods with Supply Air
HWC - Water Wash Exhaust Hoods with Supply Air and Water Mist



SUSTAINABILITY SOLUTIONS AT WAHA AIR



GOOD HEALTH AND WELL-BEING

In line with our goal of supporting a healthy and high-quality life, we offer our employees complementary health insurance coverage. In addition, we plan to implement health-focused projects that encourage healthy habits, such as smoking cessation programs, and aim to improve quality of life.



QUALITY EDUCATION

Within the scope of the work we initiated in 2022 with the WAHA AIR project, we organize technical visits to our factory, take an active role in career events, and support the process through various sponsorships. In this way, we contribute to the professional development of university and technical high school students and bring qualified human resources to the sector.



GENDER EQUALITY

In 2024, we increased female employment in the administrative and production departments of our factory. With this step, we contribute to gender equality and aim to provide a working environment based on equal rights and opportunities for all our employees.



AFFORDABLE AND CLEAN ENERGY

Thanks to our solar energy panels spread over an area of 2,500 m² on the roof of our R&D Center building and our systems with an annual capacity of 0.6 MW, we significantly reduce our carbon footprint. By generating our own electricity, we invest in reliable, sustainable, and accessible clean energy and take responsibility for an environmentally conscious future.



DECENTWORK AND ECONOMIC GROWTH

In line with our Decent Work and Economic Growth approach, our priority as an employer brand is to safeguard the rights of our employees and to create an inclusive working environment based on the principles of equality and justice for all our team members.



SUSTAINABLE CITIES AND COMMUNITIES

In line with the Sustainable Cities and Communities goal, we improve indoor air quality with the environmentally friendly and energy-efficient products we develop. We take care to ensure full compliance with European standards across all our products.



RESPONSIBLE CONSUMPTION AND PRODUCTION

In line with our Responsible Production and Consumption approach, we minimize waste by adopting lean production principles across the company. With this understanding, we prioritize recycling and use resources more consciously by sustainably increasing efficiency in our production processes.



CLIMATE ACTION

We transform our responsibility to nature into concrete actions through our environmentally friendly, technological, and energy-efficient sustainable product groups, and through our R&D efforts focused on reducing waste that may lead to climate change.



PEACE, JUSTICE AND STRONG INSTITUTIONS

In line with our Peace, Justice and Strong Institutions approach, we base our practices on the principles of transparency and accountability. Within this scope, by cooperating with relevant industry associations, especially İSKAV, we focus on the prevention of corruption and bribery and the prevention of unfair competition, and we adopt a working approach in line with ethical values.



 +971 54 367 3 367

 info@wahaair.com

 wahaair.com

 SAIL STAR BUSINESS CENTER
Floor 16th - Office 1606, Court Tower
Building - Business Bay - Dubai



*Scan the QR code
to visit our
website.*

